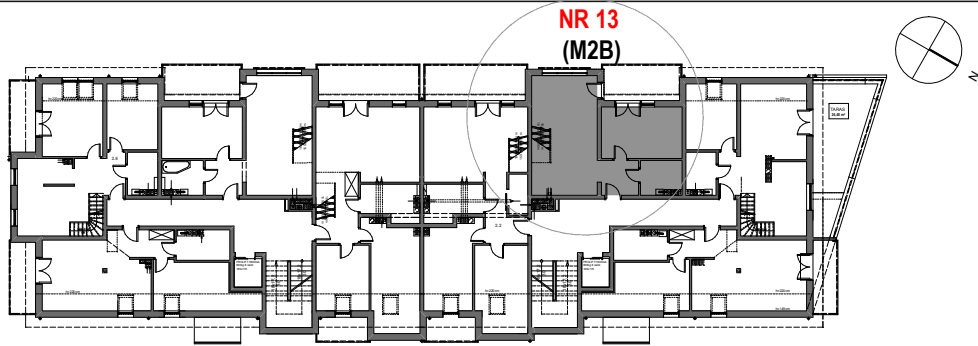
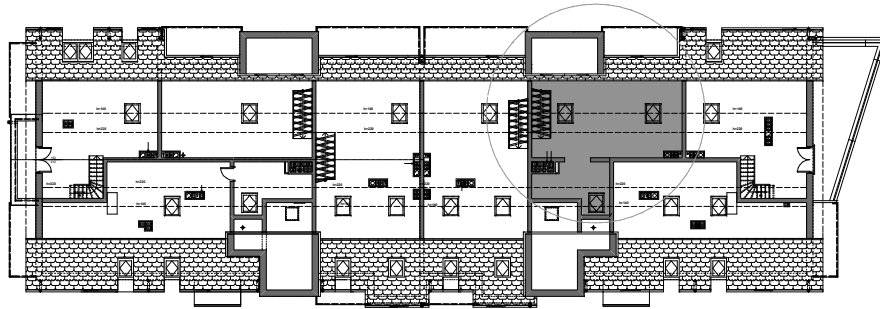


BUDYNEK MIESZKALNY WIELORODZINNY

UL. NEHRINGA NR 6A i 6B ,SZCZECIN



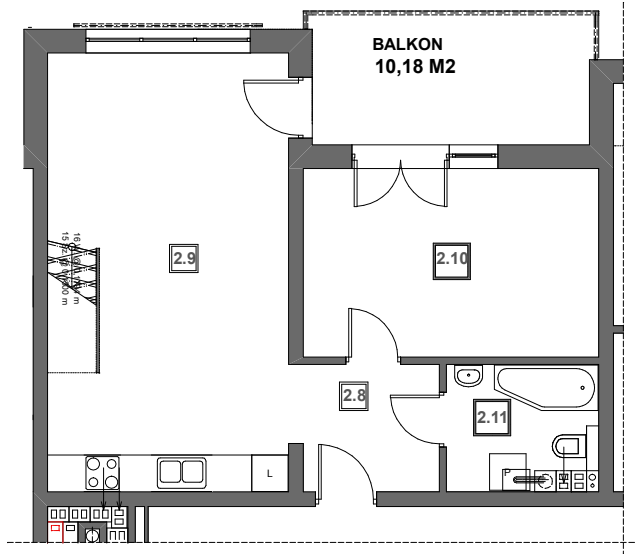
NR13 (M2B)



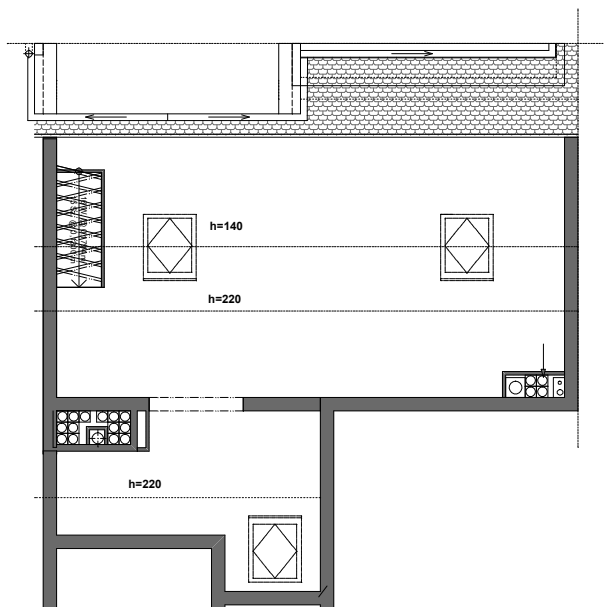
KLATKA "6A"

KLATKA "6B"

| nr | pomieszczenie | pow. |
|-----------|------------------------------|----------------------|
| 2.8 | p.pokój | 4,86 m ² |
| 2.9 | pokój dzienny+aneks kuchenny | 28,11 m ² |
| 2.10 | pokój | 14,70 m ² |
| 2.11 | łazienka | 4,54 m ² |
| RAZEM | | 52,21 m ² |
| antresola | | 25,90m ² |
| RAZEM PU | | 78,11 m ² |



PODDASZE



ANTRESOLA