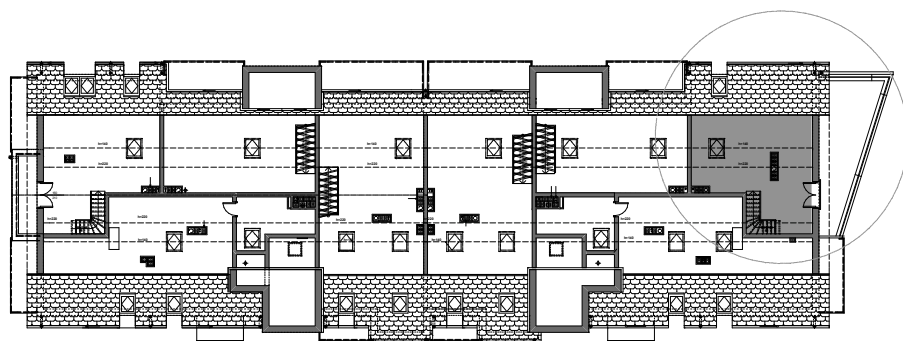
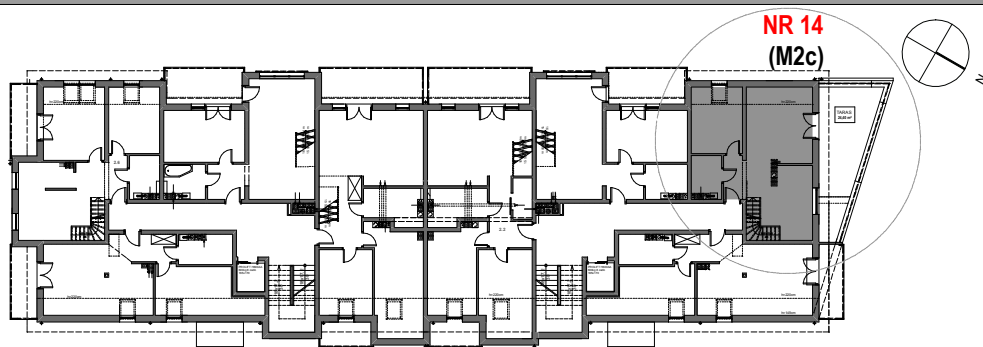


# BUDYNEK MIESZKALNY WIELORODZINNY

UL. NEHRINGA NR 6A I 6B ,SZCZECIN

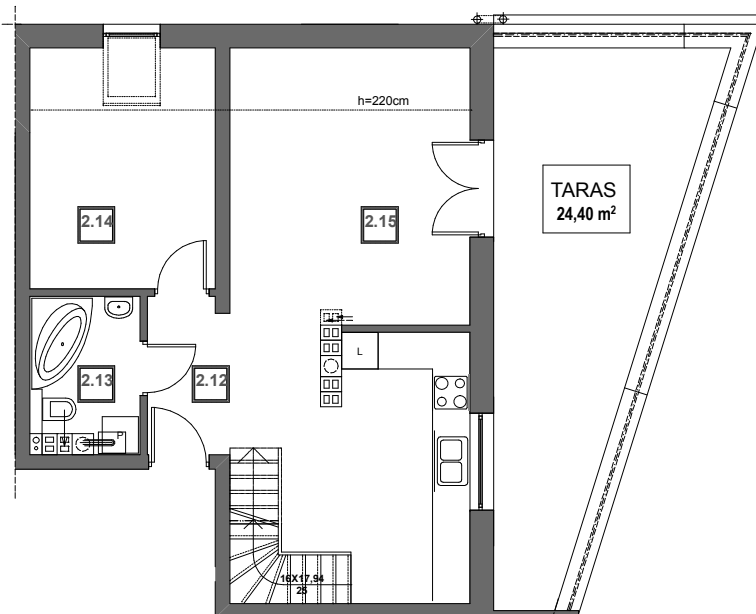


KLATKA "6A"

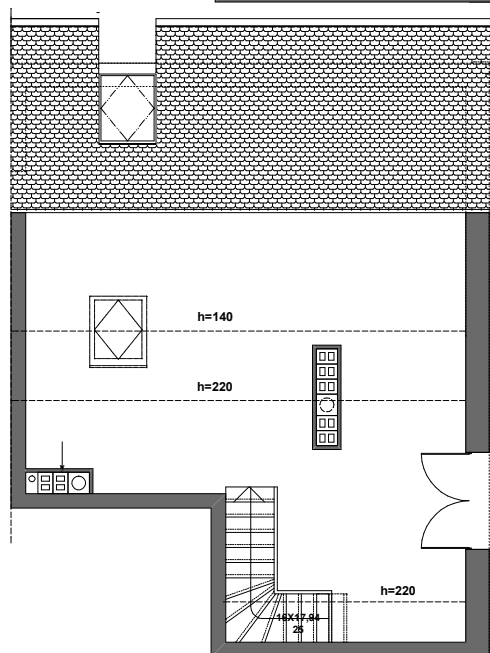
KLATKA "6B"

## NR14 (M2C)

nr	pomieszczenie	pow.
2.12	p.pokój	3,42 m <sup>2</sup>
2.13	łazienka	4,29 m <sup>2</sup>
2.14	pokój	10,39 m <sup>2</sup>
2.15	pokój dzienny+aneks kuchenny	33,16 m <sup>2</sup>
RAZEM		51,26 m <sup>2</sup>
antresola		20,69m <sup>2</sup>
RAZEM PU		71,95 m <sup>2</sup>



PODDASZE



ANTRESOLA